

Contents

Angled Tall End Panel	I-4	French Country Corner.	I-9
Chamfered Stile	I-5	Fronts	I-5
Chamfered Stile, Fluted	I-5	Internal Stiles.	I-7
Chamfered Stile, Fluted, With Flush End	I-9	Internal Top Rail	I-7
Chamfered Stile With Flush End	I-9	Overlay Fillers	I-4
Closet Rod	I-6	Peninsula Tall Cabinets	I-5
Decorative End In Tall Cabinet.	I-3	Pilaster Added To End Of Tall Cabinet . .	I-3
Door On End Of Tall Cabinet.	I-3	Pull Out Trays	I-6
Door On End Of Tall Cabinet With Flush End.	I-9	Radius End Panels.	I-9
Door Pilaster Added To The End Of Tall Cabinet	I-3	Shelf Kit	I-6
Door Rack	I-6	Shelves (Additional)	I-6
Drawer Added To Tall Cabinet	I-8	Tall Cabinet Shelf Unit	I-7
Extended Side Back	I-5	Tall End Panel	I-4
Extended Stile (Extended Ears On Frameless)	I-7	Tall End Panel Boxed	I-4
Face Frame & Door(s) On End Of Tall Cabinet	I-9	Tall Fillers.	I-4
Face Frame & Door(s) On End Of Tall Cabinet	I-9	Tall Partition	I-7
Finished Backs.	I-3	Toekick Added	I-5
Flush Sides.	I-9	Toekick Detached	I-5
Flush Subbase	I-5	Tray Partitions	I-7
		Unfinished Cabinets	I-8
		Veneered Skins	I-3
		Wood Pantry Insert.	I-6

Items Only Available in Hampshire Custom line

Chamfered Stile, Fluted, With Flush End	I-9
Chamfered Stile With Flush End	I-9
Door On End Of Tall Cabinet With Flush End.	I-9
Flush Sides.	I-9
French Country Corner.	I-9
Radius End Panels.	I-9

Tall Cabinet Modifications

For special width cabinets between standard sizes – use the next largest standard size.

i.e.	UC359624	= \$3739
	UC229012	= \$2071

For **special width cabinets wider than standard** – add 10% of the widest standard cabinet for every 3" increase in width, added to the widest standard cabinet.

i.e.	BC429624DR	= \$3238
	6" wider than standard	= \$648

For **special height cabinets between standard sizes** – use the next largest standard size and add \$100.00 in the accessory column.

i.e.	UC189524	= \$2272
	special height tall	= \$100

For **special depth cabinets between standard sizes** – use the next largest standard size.

i.e.	LTC 279618	= \$3548
	BC 336115DR	= \$2645

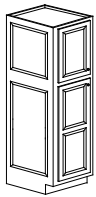
For **special depth cabinets deeper than standard sizes** - add 15% (Stonebridge) or 10% (Custom) of the standard 12" deep cabinet for every 4" increase in depth.

Finished interior means the interior of the cabinet is finished in the same wood species and finish as the exterior and the shelves are 3/4" thick plywood. Add 25% of the cabinet price. If doors are deleted, no up charge for finished interior.

Finished interior backs, when using Series 310, will be MDF core plywood.

To change the configuration of the door or drawer arrangement on a cabinet is considered a facing change as long as the overall size of the cabinet remains the same.

FACING CHANGE	\$180
---------------	-------

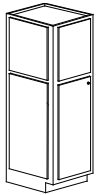


left shown

Decorative End In Tall Cabinet (not available in frameless)

Integral inlay panel manufactured into the side of a tall cabinet. Width of cabinet does not change. The decorator end will have two panels matching the door configuration of the cabinet unless specified otherwise.

DTE	L-R	\$1,057	Up to 96" high
DTE	L-R	\$1,134	96" high

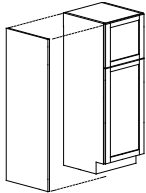


left shown

Door On End Of Tall Cabinet

A door may be added to the end of any tall cabinet. Door will be the same height as doors on front of cabinet. Cabinet width will increase by 3/4" for each door added. Door added will have the same edge profile as cabinet door.

DRADD	L-R	\$835	Up to 96" high
DRADD	L-R	\$935	96" high

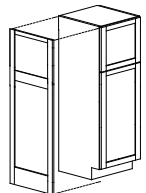


left shown

3/4" Pilaster Added To End Of Tall Cabinet (used on frameless cabinetry)

A 3/4" thick pilaster may be added to the end of any tall cabinet. The pilaster will be flush with the top, bottom, and back of cabinet end, and will protrude beyond cabinet face to line up with the front of cabinet door. The cabinet width will increase in width by 3/4" for each pilaster added.

PILT 72-84	L-R	\$360
PILT 85-96	L-R	\$402



left shown

3/4" Door Pilaster Added To The End Of Tall Cabinet (used on frameless cabinetry)

A 3/4" thick door pilaster may be added to the end of any tall cabinet. The pilaster will be flush with the top, bottom, and back of cabinet end, and will protrude beyond cabinet face to line up with the front of cabinet door. The cabinet width will increase in width by 3/4" for each door pilaster added.

DRPILT 72-84	L-R	\$1,057
DRPILT 85-96	L-R	\$1,134

Veneered Skins

1/16" thick matching wood species veneer to be field applied to the end of a tall cabinet to make a finished end. Fits behind 1/8" lip. Maximum size: 24" x 96".

VENEERED SKIN-TALL \$369

No charge for finished ends when needed if specified on original order. Send layout with order.

Finished Backs

1/2" plywood installed on back of cabinets. Cabinet depth remains the same. Overall width on back of cabinet equals overall width on face of cabinet.

Specify and add 25% of cabinet price.

Tall Fillers



3", 6", or 9" wide fillers are available shipped loose. Specify height.

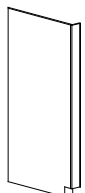
TF 3x84	\$138
TF 6-84	\$254
TF 9x84	\$383
TF 3-96	\$157
TF 6x96	\$290

Overlay Fillers

Overlay fillers are 1/2" less in width and height than the filler specified (1/4" less on frameless), excluding toekick. (i.e. OTF 3 for an 84" high tall unit is 2 1/2" x 79 1/2"). The edge profile of overlay fillers will match the edge profile of the door style specified where possible. To be used on fillers or ears when designing with 1 1/4" overlay or frameless.

OTF 3x84	\$138
OTF 6x84	\$254
OTF 3x96	\$157
OTF 6x96	\$290

Tall End Panel



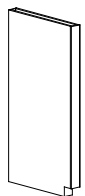
left shown

Finished end panel, including toekick, attached to a tall filler. 3/4" material with facing applied. If flush sub base is required, specify at no additional charge. 24" deep by default - specify for different depth.

TEP 1 1/2 x 84	L-R	\$575
TEP 1 1/2 x 96	L-R	\$658
TEP 3 x 84	L-R	\$575
TEP 3 x 96	L-R	\$658
TEP 6 x 84	L-R	\$603
TEP 6 x 96	L-R	\$695

To price tall units over 84" up to 96", use the 96" price.

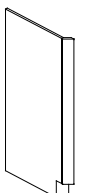
Tall End Panel Boxed



Order the above tall end panel necessary and price accordingly. Add this item if two sides are needed to make a tall end panel box.

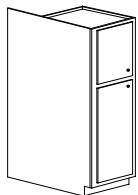
BOX-TALL	\$216
----------	-------

Angled Tall End Panel



left shown

ATEP 3x84	L-R	\$705
ATEP 3x96	L-R	\$788
ATEP 6x84	L-R	\$733
ATEP 6x96	L-R	\$824

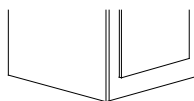


left shown

Extended Side Back

Tall cabinet side may be extended back (specify depth, max. 36")

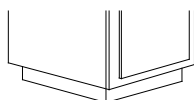
ESB TALL L-R \$428



Flush Subbase

Extend the stiles and bottom rail down to make the toe space flush giving a furniture appearance.

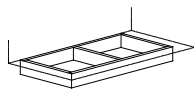
FSB \$79



Toekick Added

To add a toekick to the side or back of a tall cabinet

TKA L-R-B \$204



Toekick Detached

Any cabinet may be ordered with the toekick shipped loose. The toekick will be 7 3/4" less in width and 3 7/8" less in depth than the size of the cabinet ordered.

DETACH TK \$160

Peninsula Tall Cabinets

Face frame and doors on back of cabinet will be manufactured same as front of cabinet. i.e. PUC 368424.
Add 50% to the price of the cabinet and prefix "P"

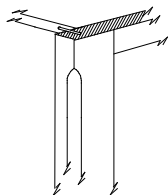
Fronts

(not available on frameless)

A front of any standard size cabinet is available. Consists of 1 1/2" face frame and is the same configuration as corresponding tall cabinet.

NOTE: Unless specified otherwise, tall cabinet fronts will be furnished with toekick.
60% of corresponding cabinet price.

FRONT-ONLY TALL

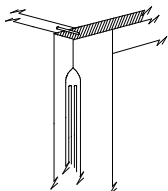


Chamfered Stile

(not available on frameless)

Any stile on a tall cabinet can be ordered as a chamfered stile. Chamfer is 1/2" x 1/2".

CS TALL L-R \$411



Chamfered Stile, Fluted

(not available on frameless)

Any stile on a tall cabinet can be ordered as a chamfered stile. Chamfer is 1/2" x 1/2".

CSFD TALL L-R \$571

Shelves (Additional)

SHELF	\$18	per linear ft	GLASS SHELF		
WOOD FRAMED			up to 36" wide	\$103	per square ft
GLASS SHELF (WFGS)	\$272	per linear ft.	wider than 36"	\$ 145	per square ft,

See M-7 for Solid Wood (Finished) Shelving

Shelf Kit

Shelf kit includes 4 adjustable shelves.

UCSK	\$311
UCEASK	\$696

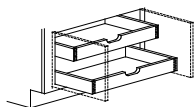
Closet Rod

A closet rod may be added to any tall unit. Specify location.

CLOSET ROD FIXED	\$160
CLOSET ROD ADJ	\$443

Pull Out Trays

5/8" Solid wood pull out trays may be ordered for any cabinet. Specify location and number. If one tray is ordered it is fixed and on the bottom of the cabinet. If more than one tray is ordered, all are adjustable.

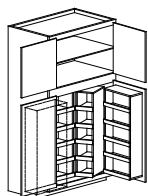


Stonebridge POT (box is 3" high) \$372

To add pull-out trays to Hampshire Custom cabinets

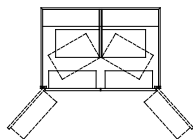
Custom POT (box is 4" high) \$507
Custom POT (box is 8" high) \$602

Wood Pantry Insert

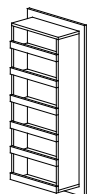


Solid wood racks on back of lower doors have 5 fixed shelves. 2 solid wood swing out racks hinged to a center partition that have 5 adjustable shelves. 10 adjustable shelves at back of lower section. Top section has 1 adjustable shelf. Must use a 3" filler if cabinet is next to a wall.

UCWPI 36 \$3,482 For use in a BF 368424. No upper shelf provided.
BRWPI 36 \$4,175 For use in a BF 368424. No upper shelf provided.
UCWPI 18 \$1,720 For use in UC 188424 must use a 9" filler when next to a wall.

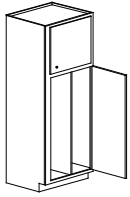


Door Rack



Solid wood storage rack may be added to the back of the door on any UC cabinet. 5 fixed shelves 4 3/4" deep.

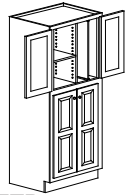
DOOR RACK \$718



Tall Partition

Partition may be specified to divide lower section of tall units. Specify distance from left or right side of inside/ outside of cabinet. Series 110 is 3/4" particleboard w/ birch foil, Series 310 is 3/4" plywood. If location not furnished, space will be divided equally.

TTP	\$316
-----	-------



Tray Partitions

1/4" plywood removable partition faced with 3/4" x 3/4" solid stock for upper section of tall units. If location not furnished, space will be divided equally.

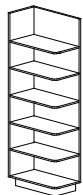
TP	\$156
----	-------

If partition is behind center mull or if fixed partition is required:

Series 110 will be 3/4 particleboard w/birch foil finish Series 310 will be 3/4" plywood edgebanded.

FTP	\$156
-----	-------

FTP-centered w/TP on
right, centered



Left shown

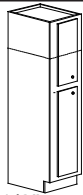
Tall Cabinet Shelf Unit

Unit is made of 1/2" thick material. Shelves are fixed and 3/4" solid with a 3" radius, toekick to match base cabinet. Unit is 24" x 12" and is 84" high including toekick.

TCSU-84 L-R	\$1,648
TCSU-96 L-R	\$1,895

If solid top is required, top will be square (no radius).

Solid Top \$161

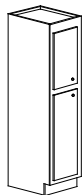


1 1/2", overall 3" wide
style, left shown

Internal Stiles (framed cabinetry only)

Up to 9" wide internal stiles are available on any tall cabinet. Overall width of cabinet does not change. Specify internal stile width, LEFT or RIGHT side, plus overall stile width.

IST 0-3 L-R	\$273
IST 3-6 L-R	\$401
IST 6-9 L-R	\$474

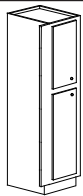


1 1/2" ITRT, overall 3" wide

Internal Top Rail (framed cabinetry only)

Up to 9" wide internal top rail on any cabinet. Specify size needed plus overall rail width.

ITRT 0-3	\$119
ITRT 3-6	\$162
ITRT 6-9	\$215



left shown

Extended Stile (Extended Ears On Frameless)

Up to 9" wide extended stiles or ears are available on any tall cabinet.

To cut a 45° angle on the end of an extended stile specify L-R and add \$46.00.

EST 0-3 L-R	\$274
EST 3-6 L-R	\$402
EST 6-9 L-R	\$476

Drawer Added To Tall Cabinet

To add a drawer to the bottom of a BR, OC, or UC, specify the number of drawers and the size of the drawer opening(s) – add to cabinet price.

12" - 21" wide cabinet (1 drawer)	\$199	per drawer
24" - 36" wide cabinet (1 drawer)	\$283	per drawer
39" - 48" wide cabinet (2 drawers)	\$199	per drawer

Unfinished Cabinets

Exterior of cabinets will be sanded and ready to receive customer's finish but will not have sealer, stain, or top coat. No warranty on unfinished cabinetry.



Flush Sides

Any framed base cabinet may be ordered with flush finished sides. The 1/8" lip is eliminated but the overall size of the cabinet remains the same.

FFS L-R \$334



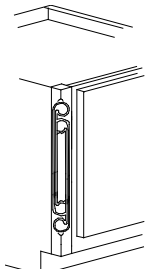
left shown

Radius End Panels

3" or 6" radius finished end panel , including toekick.



RAD 3x84	L-R	\$1,740
RAD 3x96	L-R	\$1,991
RAD 6x84	L-R	\$1,860
RAD 6x96	L-R	\$2,111



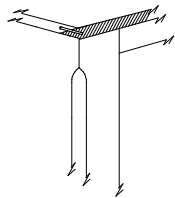
Right shown

French Country Corner (framed cabinetry only)



Radius corner with special carving. Overall width of cabinet remains the same. 1 1/2" wide face plus 1 1/2" wide stile as pictured.

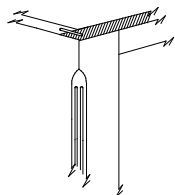
FRENCH CC-84	L-R	\$2,057	For cabinets 85" - 96" high
FRENCH CC-96	L-R	\$2,173	For cabinets 85" - 96" high



Chamfered Stile With Flush End (framed cabinetry only)

Any stile on a tall cabinet can be ordered as a chamfered stile. Chamfer is 1/2" x 1/2". Cabinet will be manufactured with a flush finished side.

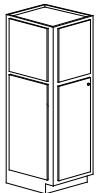
CS FLUSH TALL	L-R	\$578
---------------	-----	-------



Chamfered Stile, Fluted, With Flush End (framed cabinetry only)

Any stile on a tall cabinet can be ordered as a chamfered stile with flute detail. The chamfered area will have two 1/8" wide flutes. Chamfer is 1/2" x 1/2". Cabinet will be manufactured with a flush finish side.

CSFD FLUSH TALL	L-R	\$705
-----------------	-----	-------



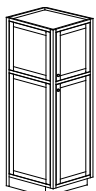
Left shown



Door On End Of Tall Cabinet With Flush End

Flush, finished end, with door(s) applied to end of cabinet. This option can not be used with Inset or Beaded Inset door overlay.

DRADDFLUSH	L-R	\$835	over 84" and up to 96" high
DRADDFLUSH	L-R	\$935	over 84" and up to 96" high



left shown



Face Frame & Door(s) On End Of Tall Cabinet (framed cabinetry only)

To apply working or non-operable doors on the end of a cabinet. Manufactured with a flush end that includes 1 1/2" rails and stiles.

DRTE	L-R	\$1,134	Over 84" and up to 96" high
DRTE	L-R	\$1,292	Over 84" and up to 96" high
DRTE-NON	L-R	\$1,134	Up to 84" high
DRTE-NON	L-R	\$1,292	Over 84" and up to 96" high

Page for notes