

Contents

Dimensional Information	J-2	Drawer Base Combination Units, cont.. . .	J-5
18" High Drawer Base Cabinets	J-9	Drop In Range Base Cabinets	J-11
24" Bench Cabinets	J-9	File Drawer Cabinets.	J-6
Apron Sink Cabinets	J-12	Finished Blind	J-7
Base Angle Cabinets	J-7	Framed Base Cabinets.	J-2
Base Cabinets	J-3	Frameless Base Cabinets	J-2
Base Corner Cabinets	J-13	Glass Drawer Front Cabinets	J-7
Base Microwave Cabinets	J-9	Island End Caps	J-14 - J-15
Base Spice Cabinets	J-6	Lazy Susan Base Cabinets	J-8
Base Wine Cabinets	J-6	Oven Base Cabinets	J-11
Blind Corner Optimizer	J-7	Range Base Cabinet for Down Draft Burner Top	J-10
BX Cabinets (Full Height Doors)	J-3	Range Base Cabinets	J-10
Cooktop Cabinets	J-10	Sink Base Cabinets	J-11
Corner Sink Base	J-1	Sink Base Cabinet with Full Height Doors & Hidden Apron.	J-11
Diagonal Sink Base Corner Cabinet	J-12	Swing Out Shelves for Base Corner Cabinets	J-7
Diagonal Sink Base Corner Cabinet, Recessed	J-13	Super Lazy Susan Base Cabinets	J-8
Drawer Base Cabinets	J-4	Warming Drawer Cabinet	J-9
Drawer Base Cabinets with Bread Lid	J-3		
Drawer Base Combination Units	J-4		

Items Only Available in Hampshire Custom line

Bow Front and Curved Door Cabinetry	J-16	Sink Base Clipped Corner Cabinets	J-17
Bow Front Cabinet	J-16		
Curved BX Cabinets	J-16		
Curved Corner Base Cabinet	J-16		

Dimensional Information - Framed Base Cabinets

Base units 9" through 21" wide have a single door and single drawer.

Base units 24" through 36" have a pair of butt doors and one drawer.

Base units 39" through 45" wide have two doors with a 1 1/2" center mull (framed) and two drawers.

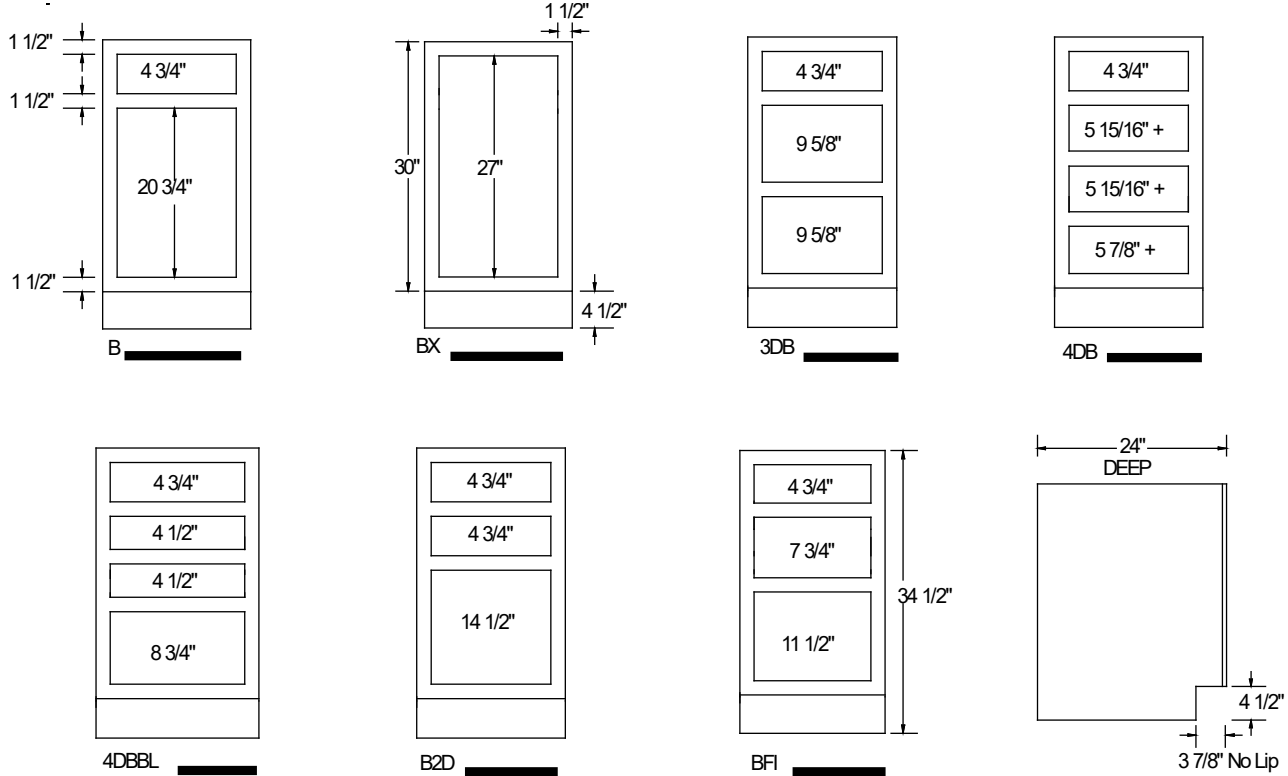
A 48" base unit has two pair of butt doors and two drawers.

Standard base units are 24" deep and 34 1/2" high, have one shelf, 15 1/2" deep

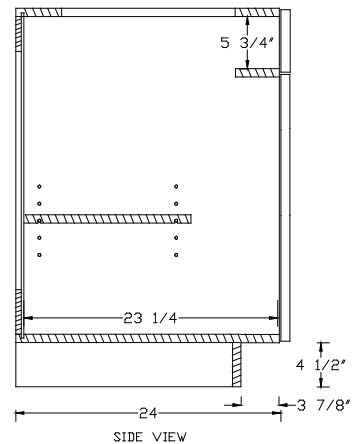
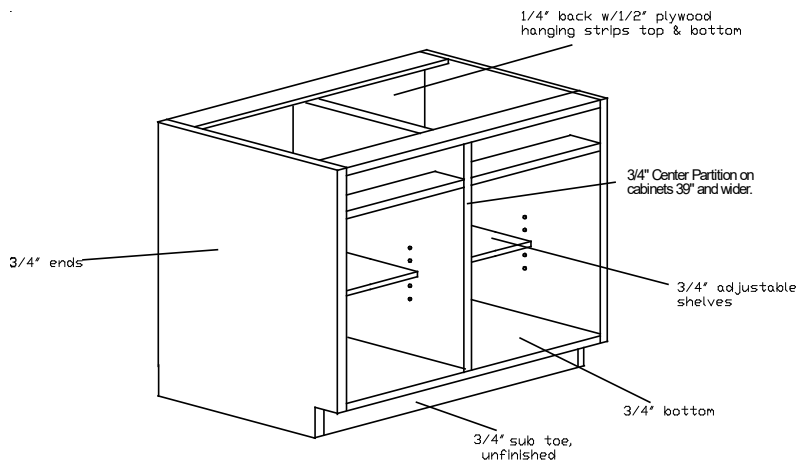
Standard base units, when doors are deleted, will have a finished interior. The shelf will be full depth.

Framed Base Cabinets

Dimensional information given is based on 1 1/2" rails.

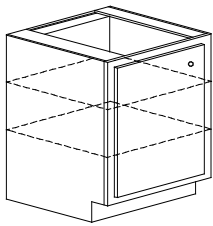


Frameless Base Cabinets

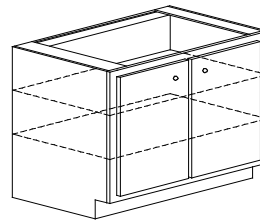


BX Cabinets (Full Height Doors)

BX Cabinets have full height doors and two full depth shelves.

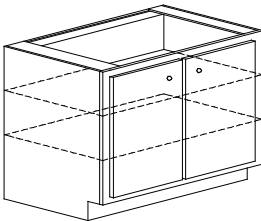


**BX 6	L-R	\$670
*BX 9	L-R	\$710
BX 12	L-R	\$735
BX 15	L-R	\$761
BX 18	L-R	\$784
BX 21	L-R	\$808

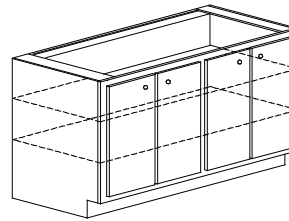


BX 24	\$866
BX 27	\$892
BX 30	\$978
BX 33	\$997
BX 36	\$1024

NOTE: Frameless 39"-48" wide cabinets will have a 3/4" center partition.

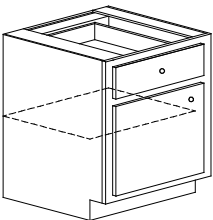


BX 39	\$1147
BX 42	\$1196
BX 45	\$1267

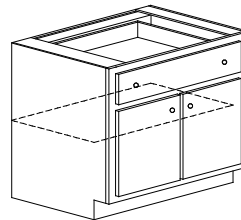


BX 48	\$1484
-------	--------

Base Cabinets

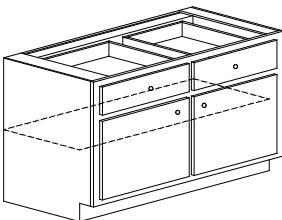


B 9	L-R	\$760
B 12	L-R	\$785
B 15	L-R	\$811
B 18	L-R	\$834
B 21	L-R	\$858

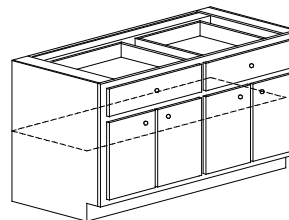


B 24	\$916
B 27	\$942
B 30	\$1028
B 33	\$1047
B 36	\$1074

NOTE: Frameless 39"-48" wide cabinets will have a 3/4" center partition.



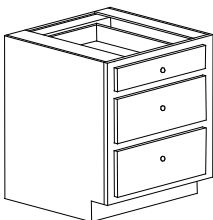
B 39	\$1197
B 42	\$1246
B 45	\$1317



B 48	\$1534
------	--------

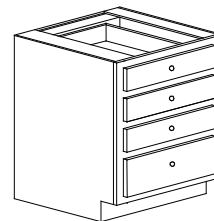
Drawer Base Cabinets with Bread Lid

Includes bread drawer with sliding plexiglass lid removable for cleaning



3 DBBL 12	\$1085
3 DBBL 15	\$1151
3 DBBL 18	\$1211
3 DBBL 21	\$1251
3 DBBL 24	\$1304

Bread drawer in middle opening

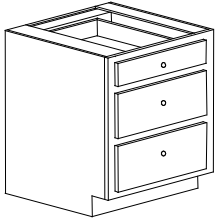


4 DBBL 12	\$1170
4 DBBL 15	\$1237
4 DBBL 18	\$1296
4 DBBL 21	\$1335
4 DBBL 24	\$1440

Bread drawer in bottom opening

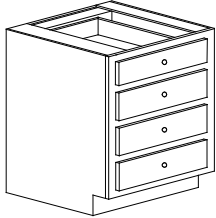
*Call factory for availability of door styles

Drawer Base Cabinets



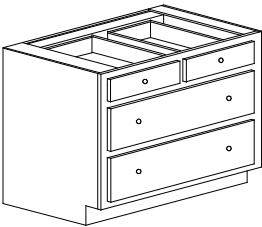
3 DB 12	\$1026
3 DB 15	\$1092
3 DB 18	\$1152
3 DB 21	\$1193
3 DB 24	\$1256

3 DB 27	\$1315
3 DB 30	\$1376
3 DB 33	\$1438
3 DB 36	\$1498

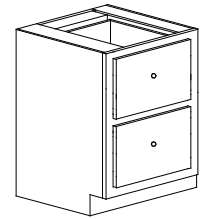


4 DB 12	\$1110
4 DB 15	\$1177
4 DB 18	\$1236
4 DB 21	\$1275
4 DB 24	\$1340

4 DB 27	\$1459
4 DB 30	\$1520
4 DB 33	\$1581
4 DB 36	\$1642

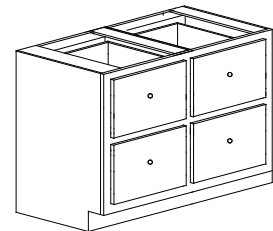


4 DB 27 COMBO	\$1459
4 DB 30 COMBO	\$1520
4 DB 33 COMBO	\$1581
4 DB 36 COMBO	\$1642



2 DB 12	\$903
2 DB 15	\$932
2 DB 18	\$993
2 DB 21	\$1026
2 DB 24	\$1096

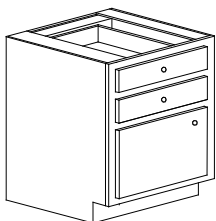
2 DB 27	\$1166
2 DB 30	\$1236
2 DB 33	\$1306
2 DB 36	\$1376



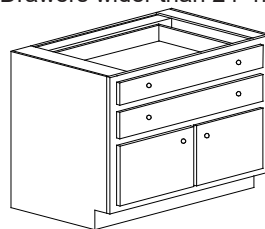
4 DB 2H 27	\$1459
4 DB 2H 30	\$1520
4 DB 2H 33	\$1581
4 DB 2H 36	\$1642

Drawer Base Combination Units

The below cabinets have two standard drawers at top and door(s) below. No shelf included.
Drawers 12" to 24" wide have a single pull. Drawers wider than 24" have two pulls.



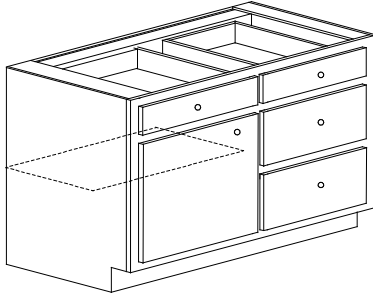
B 2D 12	L-R	\$889
B 2D 15	L-R	\$917
B 2D 18	L-R	\$945
B 2D 21	L-R	\$972



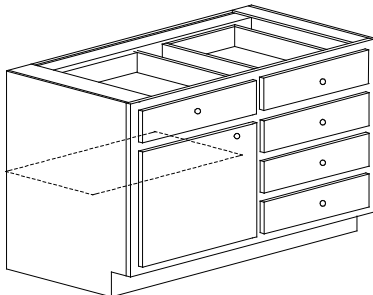
B 2D 24	\$1060
B 2D 27	\$1112
B 2D 30	\$1162
B 2D 33	\$1215
B 2D 36	\$1266

Drawer Base Combination Units, cont.

Cabinets have center partition with one shelf on cabinet side, stack of drawers opposite side.
Specify drawer stack L-R.

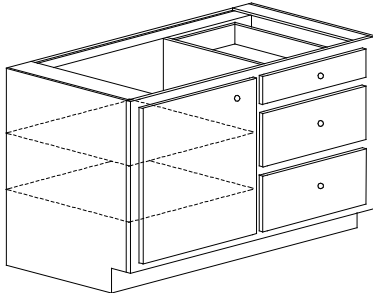


B 30 COMBO	L-R-3	\$1711
B 33 COMBO	L-R-3	\$1749
B 36 COMBO	L-R-3	\$1786
B 39 COMBO	L-R-3	\$1816
B 42 COMBO	L-R-3	\$1845

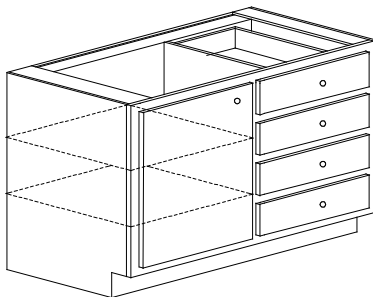


B 30 COMBO	L-R-4	\$1789
B 33 COMBO	L-R-4	\$1827
B 36 COMBO	L-R-4	\$1863
B 39 COMBO	L-R-4	\$1893
B 42 COMBO	L-R-4	\$1921

BX 30 COMBO cabinets have a center partition with two full depth adjustable shelves on the cabinet side, and a stack of drawers on the opposite site.



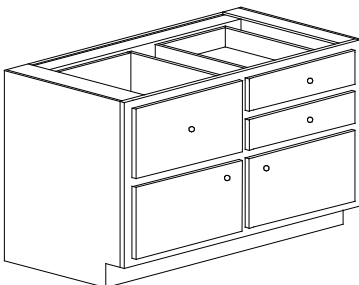
BX 30 COMBO	L-R-3	\$1690
BX 33 COMBO	L-R-3	\$1728
BX 36 COMBO	L-R-3	\$1764
BX 39 COMBO	L-R-3	\$1793
BX 42 COMBO	L-R-3	\$1821



BX 30 COMBO	L-R-4	\$1768
BX 33 COMBO	L-R-4	\$1805
BX 36 COMBO	L-R-4	\$1841
BX 39 COMBO	L-R-4	\$1869
BX 42 COMBO	L-R-4	\$1897

Cabinet has two standard drawers and one large bread drawer at top, with doors below.
No shelf included.

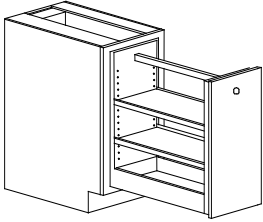
Specify large bread drawer L-R.



B 3D 30	L-R	\$1718
B 3D 33	L-R	\$1744
B 3D 36	L-R	\$1770
B 3D 39	L-R	\$1795
B 3D 42	L-R	\$1820

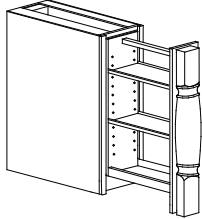
Doors and drawer fronts are priced separately.
See section E for details.

Base Spice Cabinets



Door attached to a wood insert with full extension slides. Insert has one fixed drawer box on the bottom, and two adjustable shelves above.

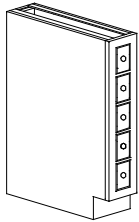
BX6 - SPICE PULL	L-R	\$1330
BX9 - SPICE PULL	L-R	\$1370
BX12 - SPICE PULL	L-R	\$1395



9" wide cabinet with flush sub base. The slab door is attached to a wood insert with full extension slides. Insert has one fixed drawer box on the bottom, and two adjustable shelves above

BX9 - SPIN PULL OUT	L-R	\$4614
---------------------	-----	--------

SPIN1, SPLIT OPTION 4, 7" wide attaches to the door.

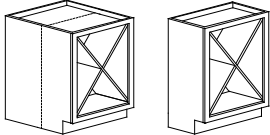


4" wide x 4 5/8" high openings. Drawers are inset.

Each slab drawer head is attached to a drawer box and operates without drawer tracks.

BX 7-5 - SPICE	\$1418
----------------	--------

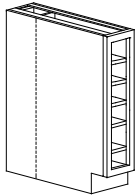
Base Wine Cabinets



Cabinet with X configuration for wine storage. Includes finished interior.

BX24 WINE	\$1595
BX24-12 WINE	\$1430

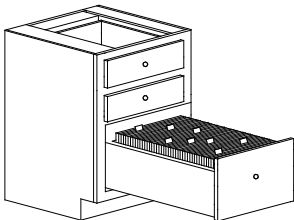
Cabinets deeper than 15" will include a partition.



4" x 4" openings, partition at 15" depth, finished interior.

BX 7-6 WINE	\$1074
-------------	--------

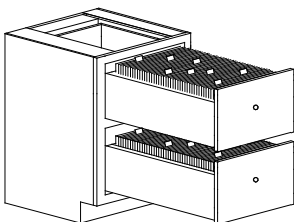
File Drawer Cabinets



Cabinet is 34 1/2" high and 24" deep with two shallow top drawers. Bottom drawer has hanging file system.

BFI 15 (lateral)	\$1309
BFI 18	\$1340
BFI 24	\$1429

24" wide cabinet will have a vertical partition in file drawer.



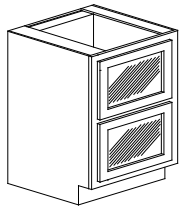
Cabinet is 34 1/2" high and 24" deep. Both drawers have a hanging file system.

BFI 2D15 (lateral)	\$1555
BFI 2D18	\$1644
BFI 2D24 (lateral)	\$1733
BFI 2D30 (lateral)	\$1928
BFI 2D33 (lateral)	\$1990
BFI 2D36 (lateral)	\$2050

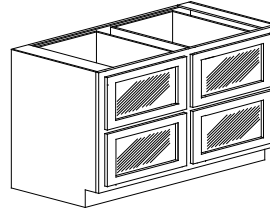
24" wide cabinet will have a vertical partition in file drawer.

Glass Drawer Front Cabinets

Cabinets have two drawers (high) with framed glass drawer fronts. Removable partition 3" behind glass drawer front.



2 GDB 12	\$1061
2 GDB 15	\$1099
2 GDB 18	\$1138
2 GDB 21	\$1176
2 GDB 24	\$1316



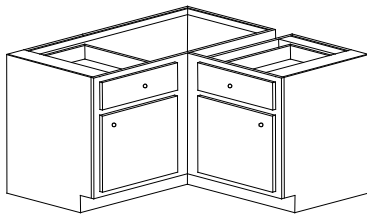
4 GDB 27	\$1855
4 GDB 30	\$1882
4 GDB 33	\$1911
4 GDB 36	\$1939

Base Corner Cabinets

Any standard size cabinet 36" through 48" wide may be ordered as a base corner cabinet for the same price as the standard base cabinet.

When ordering a base corner cabinet, insert the letters "BC" in the model no. and indicate whether the blind is on the left or right.

36" through 45" wide cabinets have a single door hinged on the blind side. 48" wide cabinets have a pair of butt doors.



BBC 42 R (Right shown)

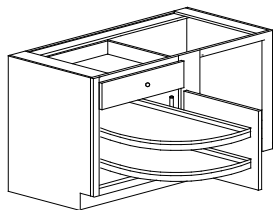
Base corner cabinets have a 5 1/2" center mull and must be pulled a minimum of 1" to allow clearance of drawers and pulls on adjacent cabinets.

Base corner cabinets have a 24" blind. If a different size blind is desired, specify the size.

NOTE: Corner clearance must also be provided on adjacent cabinets with the use of fillers or ears.

BBC 36	L-R	\$1074
BBC 39	L-R	\$1197
BBC 42	L-R	\$1246
BBC 45	L-R	\$1317
BBC 48	L-R	\$1534

Swing Out Shelves for Base Corner Cabinets



Swing out shelf constructed of 5/8" plywood with a vinyl band with a 1" high edge. Recommended for BC 42, 45 and 48 only.

The two shelf system features pivot and pull slides.

Specify SOS - SLIDEOUT \$1,450

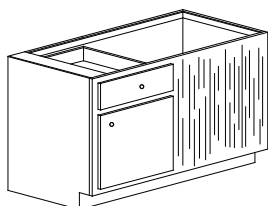
Blind Corner Optimizer



Fits in a BC42 or BC45 only.

Specify 5PSP15 (R or L) \$,2300

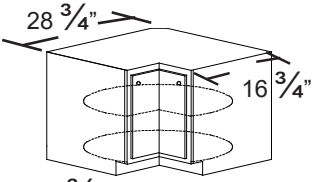
Finished Blind



A finished blind is available on any base corner cabinet.

Specify BCFB.....\$447

Lazy Susan Base Cabinets

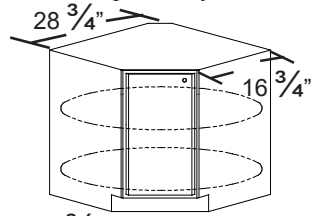


Lazy Susan cabinet has hinged door, and two independently rotating wood shelves.

LS 36 L-R \$1646

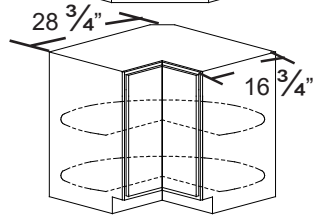
For optional separately hinged doors, specify which door to open first.

Specify 1-L, 1-R and add \$92



Lazy Susan cabinet has diagonal hinged door, and two independently rotating wood shelves.

LS 36D L-R \$1646



Lazy Susan cabinet has revolving door. Two wood shelves attached to door.

LSR 36 \$1721

A LSEP (Lazy Susan end panel) will be shipped at no charge when a finished end is required.

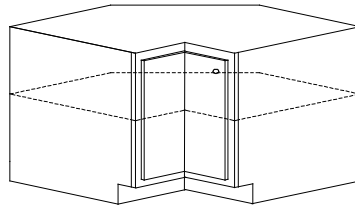
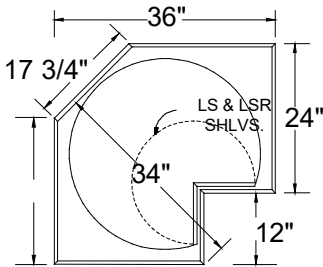
Super Lazy Susan Base Cabinets

Super Lazy Susan has two independently rotating wood shelves. Bottom shelf is fixed and middle shelf is adjustable.

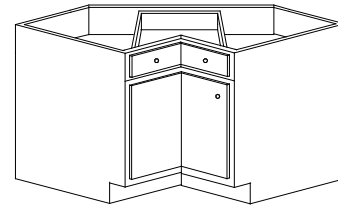
For optional separately hinged doors, specify which door to open first.

Specify 1-L or 1-R and add \$92

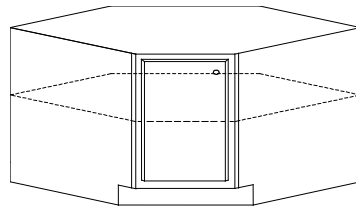
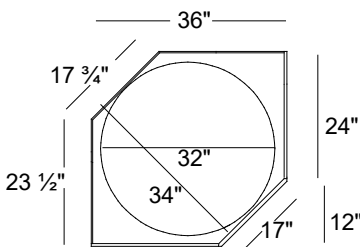
For diagonal hinged door, specify as SLS 36D



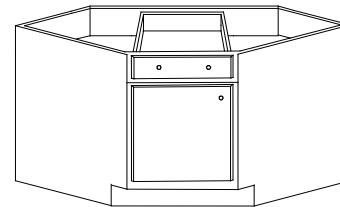
SLS 36 L-R \$2163



SLS DRW 36 L-R \$2625



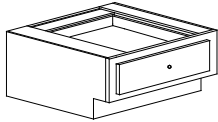
SLS 36D L-R \$2163



SLS DRW 36D L-R \$2625

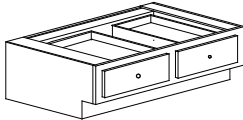
18" High Drawer Base Cabinets

NOTE: Frameless 39"-48" wide cabinets will have a 3/4" center partition.



1 DB 18-18" high	\$560
1 DB 21-18" high	\$603
1 DB 24-18" high	\$645
1 DB 27-18" high	\$687

1 DB 30-18" high	\$729
1 DB 33-18" high	\$799
1 DB 36-18" high	\$847

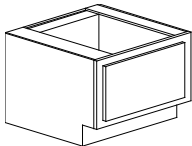


2 DB 39-18" high	\$1090
2 DB 42-18" high	\$1140
2 DB 45-18" high	\$1190
2 DB 48-18" high	\$1240

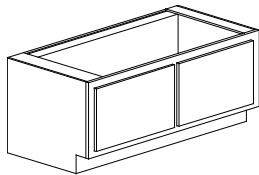
24" Bench Cabinets

Bench Cabinets are 18" high, and have a non-operable door attached. Specify if access to front of cabinet is necessary.

NOTE: Frameless 39"-48" wide cabinets will have a 3/4" center partition.



BENCH 18-18" high	\$489
BENCH 21-18" high	\$508



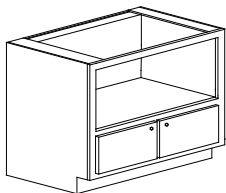
BENCH 24-18" high	\$559	BENCH 39-18" high	\$802
BENCH 27-18" high	\$581	BENCH 42-18" high	\$846
BENCH 30-18" high	\$655	BENCH 45-18" high	\$906
BENCH 33-18" high	\$718	BENCH 48-18" high	\$1095
BENCH 36-18" high	\$742		

For wood top bench seats, see Section M.

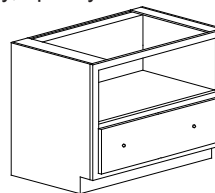
Base Microwave Cabinets

Cabinet will be made with 1 1/2" stiles and an opening 16 3/4" high unless specified. No top in cabinet. Specify width and height of opening.

If finished microwave area is necessary, specify MICRO FI \$225



B 24 MOC-DR	\$927
B 27 MOC-DR	\$1009
B 30 MOC-DR	\$1091
B 33 MOC-DR	\$1159
B 36 MOC-DR	\$1228

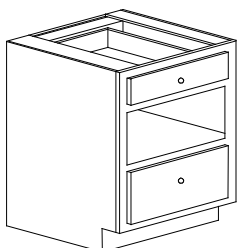


B 24 MOC-DWR	\$1060
B 27 MOC-DWR	\$1150
B 30 MOC-DWR	\$1240
B 33 MOC-DWR	\$1310
B 36 MOC-DWR	\$1380

Warming Drawer Cabinet

A 9" high opening with standard interior will be provided unless specified.

Worksheet must be provided.



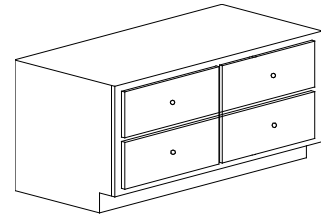
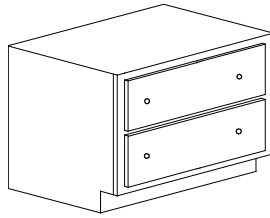
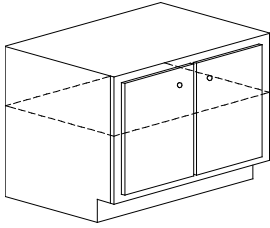
WDB 24	\$1285
WDB 27	\$1343
WDB 30	\$1401

A decorative panel to cover the appliance can be ordered. Indicate sizes, reveals, door applied, etc. Send drawing.

Specify WDBDP \$210

Cooktop Cabinets

Flush top, not finished. Height will be 28 1/4" unless specified otherwise.
NOTE: Frameless 39"-48" wide cabinets will have a 3/4" center partition.



COOK 30	\$881
COOK 33	\$903
COOK 36	\$956
COOK 39	\$1005
COOK 42	\$1074
COOK 45	\$1117
COOK 48	\$1254

COOK 2D 30	\$1278
COOK 2D 33	\$1301
COOK 2D 36	\$1354

COOK 4D 39	\$1800
COOK 4D 42	\$1869
COOK 4D 45	\$1912
COOK 4D 48	\$2050

Range Base Cabinets

Range bases cabinets are the same as base cabinets - less drawer boxes. See page J-2 for construction details.

NOTE: Frameless 39"-48" wide cabinets will have a 3/4" center partition.

RB 24	\$805
RB 27	\$819
RB 30	\$879

RB 33	\$902
RB 36	\$953
RB 39	\$969

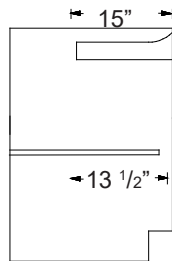
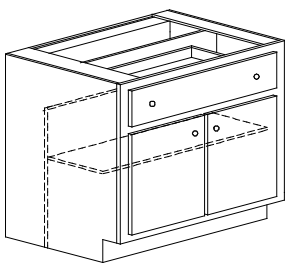
RB 42	\$1036
RB 45	\$1078
RB 48	\$1214

Range Base Cabinet for Down Draft Burner Top

Cabinet has removable false back and an adjustable shelf. Scooped drawers 15" deep.

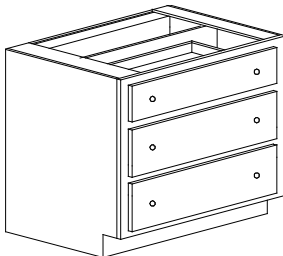
To delete drawers and replace with false panels, specify and deduct \$235

NOTE: Frameless 39"-48" wide cabinets will have a 3/4" center partition.



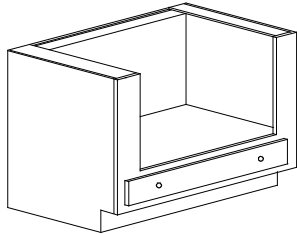
RB 27DD	\$1074
RB 30DD	\$1156
RB 33DD	\$1197
RB 36DD	\$1225

RB 39DD	\$1291
RB 42DD	\$1338
RB 45DD	\$1406
RB 48DD	\$1637



3DRB 33DD	\$1589
3DRB 36DD	\$1649

Drop In Range Base Cabinets



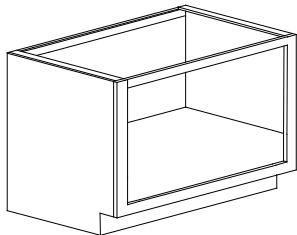
Specify cutout sizes.
When not specified, cabinet will be made with 3" stiles and cutout of 20" high.

Maximum cutout is 2 1/4" less than overall width x 23" high. If higher cutout is needed, drawer will be deleted.

Worksheet must be provided.

DRB 27	\$1010
DRB 30	\$1091
DRB 33	\$1159
DRB 36	\$1228

Oven Base Cabinets

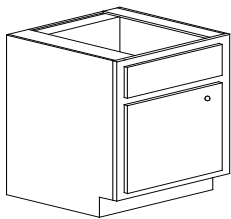


Cabinet is 3" less than width of opening unless specified otherwise.

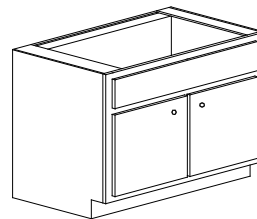
Worksheet must be provided.

BO 27	\$663
BO 30	\$722
BO 33	\$737
BO 36	\$755

Sink Base Cabinets

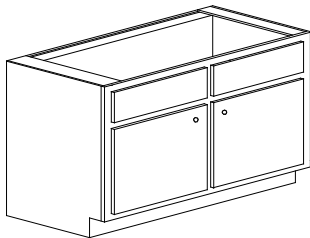


SB 15	L-R	\$726
SB 18	L-R	\$749
SB 21	L-R	\$773

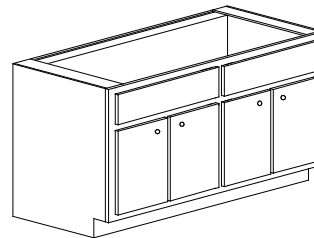


SB 24	\$831
SB 27	\$857
SB 30	\$943
SB 33	\$962
SB 36	\$989

NOTE: Frameless 39"-48" wide cabinets will have a 3/4" center partition.



SB 39	\$1027
SB 42	\$1161
SB 45	\$1276

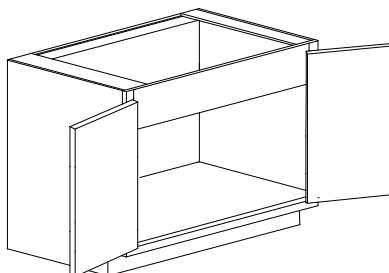


SB 48	\$1364
-------	--------

See section K for False Front/Tilt OutTrays

Sink Base Cabinet with Full Height Doors & Hidden Apron

Sink base cabinet with full height (BX) doors, with a 7 3/4" wide top rail



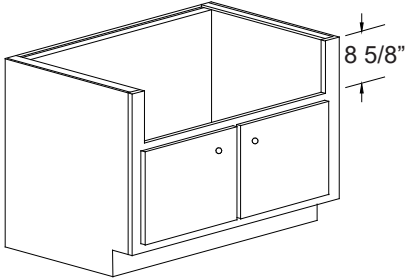
SBX 21 HA	L-R	\$753	SBX 30 HA	\$837
SBX 24 HA		\$808	SBX 33 HA	\$861
SBX 27 HA		\$826	SBX 36 HA	\$914

Apron Sink Cabinets

When not specified, cabinet will be made with 1 1/2 stiles and a cutout of 8 5/8" high. Specify width and height of opening.

Worksheet must be provided

NOTE: To add a floor to top of cross rail opening. Specify FLOOR BEHIND \$127

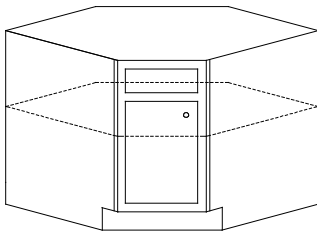


APRON 24 \$978
APRON 27 \$995
APRON 30 \$1008

APRON 33 \$1030
APRON 36 \$1083
APRON 39 \$1132

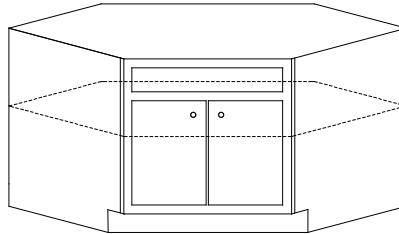
Diagonal Sink Base Corner Cabinet

Diagonal sink base corner cabinet has a false panel and door(s). Includes 1 adjustable shelf.



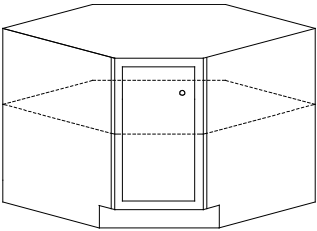
DSBC 33 L-R \$1339
DSBC 36 L-R \$1412
DSBC 39 L-R \$1485

For drawer in lieu of false panel specify and add \$199

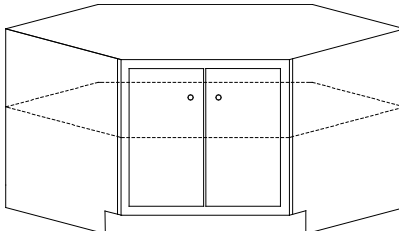


DSBC 42 \$1560
DSBC 45 \$1637
DSBC 48 \$1712

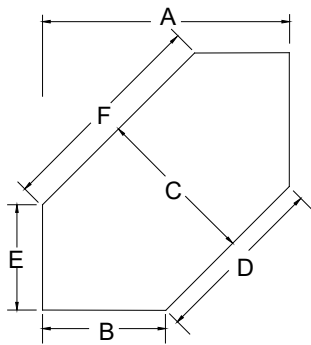
For drawer in lieu of false panel specify and add \$283



DSBCX 33 L-R \$1306
DSBCX 36 L-R \$1379
DSBCX 39 L-R \$1452



DSBCX 42 \$1523
DSBCX 45 \$1595
DSBCX 48 \$1667

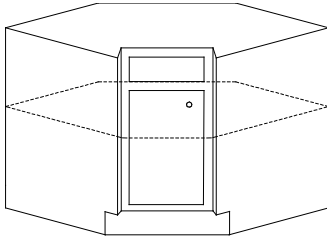


	A	B	C	D	E	F
DSBC 33	33	24	30	12 3/4	18	20
DSBC 36	36	24	30	17	18 1/2	24 3/4
DSBC 39	39	24	30	24 1/4	18 1/2	29
DSBC 42	42	24	30	25 1/2	18 1/2	33 1/2
DSBC 45	45	24	30	29 3/4	18 1/2	37 1/2
DSBC 48	48	24	30	34	18 1/2	41 3/4

Diagonal Sink Base Corner Cabinet, Recessed

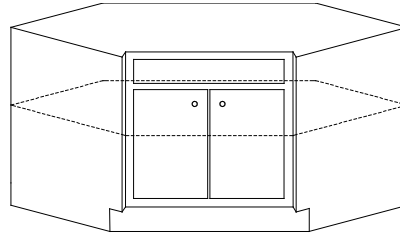
Diagonal sink base corner cabinet has a false panel and door(s). Includes 1 adjustable shelf.

Front is recessed back 5 1/2"



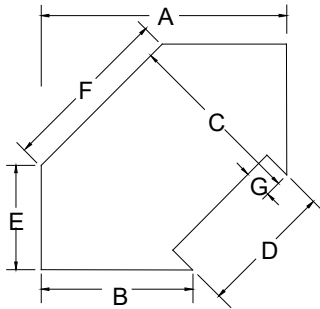
DSBCR 36 L-R \$1474
DSBCR 39 L-R \$1543

For drawer in lieu of false panel specify and add \$199



DSBCR 42 \$1638

For drawer in lieu of false panel specify and add \$283

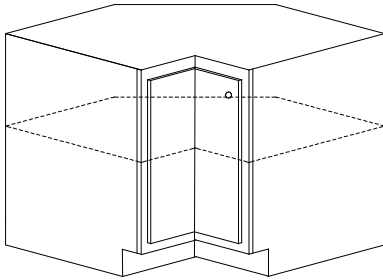


	A	B	C	D	E	F	G
DSBCR 36	36	24	30	17	18 1/2	24 3/4	5 1/2
DSBCR 39	39	24	30	24 1/4	18 1/2	29	5 1/2
DSBCR 42	42	24	30	25 1/2	18 1/2	33 1/2	5 1/2

Corner Sink Base

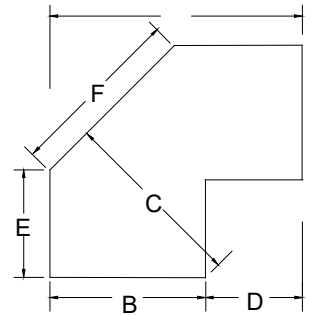
Corner sink base has hinge door and includes one adjustable shelf.

Note: wood revolving shelves cannot be added to this cabinet.



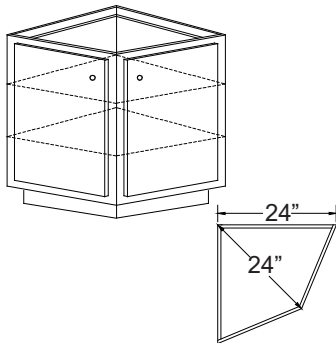
CSB 36 L-R \$1476
CSB 39 L-R \$1554
CSB 42 L-R \$1630

	A	B	C	D	E	F
CSB 36	36	24	30	12	18 1/2	24 3/4
CSB 39	39	24	30	15	18 1/2	29
CSB 42	42	24	30	18	18 1/2	33 1/4

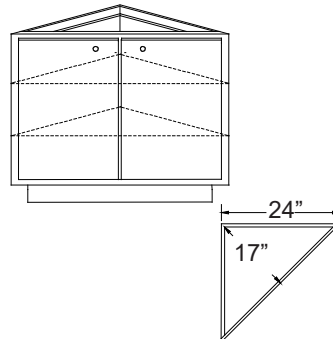


Base Angle Cabinets

Cabinets are angled, have two adjustable shelves, and two full height doors. Unless specified otherwise, doors will be hinged as shown.



BEA 24 \$1176

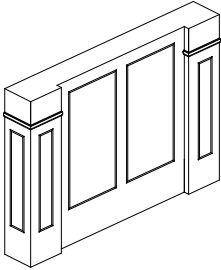


BA 2424 \$1109

Doors and drawer fronts are priced separately. See section E for details.

Island End Cap A

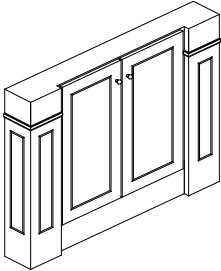
Island end cap with (2) 6" x 6" posts on each end w/ (2) integral panels in each. Integral panels in face with cover moulding applied. Comes standard at 34-1/2" high and 6" deep unless otherwise specified. Back will be flush finished.



ISLAND CAP A 36 X 34.5 X 6	\$2763
ISLAND CAP A 39 X 34.5 X 6	\$3021
ISLAND CAP A 42 X 34.5 X 6	\$3072
ISLAND CAP A 45 X 34.5 X 6	\$3123
ISLAND CAP A 48 X 34.5 X 6	\$3174
ISLAND CAP A 51 X 34.5 X 6	\$3225
ISLAND CAP A 54 X 34.5 X 6	\$3276

Island End Cap A - Operable

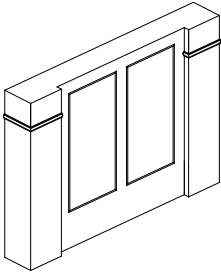
Island end cap with (2) 6" x 6" posts on each end w/ (2) integral panels in each. Operable doors on face with (2) adjustable shelves. Cover moulding applied. Comes standard at 34-1/2" high and 6" deep unless otherwise specified. Back will be flush finished.



ISLAND CAP A - OP 36 X 34.5 X 6	\$3099
ISLAND CAP A - OP 39 X 34.5 X 6	\$3357
ISLAND CAP A - OP 42 X 34.5 X 6	\$3408
ISLAND CAP A - OP 45 X 34.5 X 6	\$3459
ISLAND CAP A - OP 48 X 34.5 X 6	\$3510
ISLAND CAP A - OP 51 X 34.5 X 6	\$3561
ISLAND CAP A - OP 54 X 34.5 X 6	\$3612

Island End Cap B

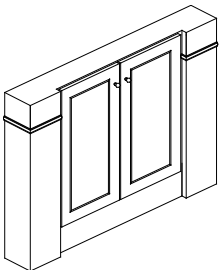
Island end cap with (2) 6" x 6" posts on each end. Integral panels in face with cover moulding applied. Comes standard at 34-1/2" high and 6" deep unless otherwise specified. Back will be flush finished.



ISLAND CAP B 36 X 34.5 X 6	\$1935
ISLAND CAP B 39 X 34.5 X 6	\$2193
ISLAND CAP B 42 X 34.5 X 6	\$2244
ISLAND CAP B 45 X 34.5 X 6	\$2295
ISLAND CAP B 48 X 34.5 X 6	\$2346
ISLAND CAP B 51 X 34.5 X 6	\$2397
ISLAND CAP B 54 X 34.5 X 6	\$2448

Island End Cap B - Operable

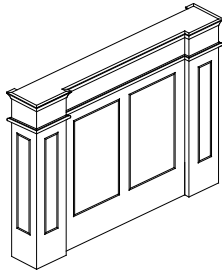
Island end cap with (2) 6" x 6" posts on each end. Operable doors on face with (2) adjustable shelves. Cover moulding applied. Comes standard at 34-1/2" high and 6" deep unless otherwise specified. Back will be flush finished.



ISLAND CAP B - OP 36 X 34.5 X 6	\$2271
ISLAND CAP B - OP 39 X 34.5 X 6	\$2529
ISLAND CAP B - OP 42 X 34.5 X 6	\$2580
ISLAND CAP B - OP 45 X 34.5 X 6	\$2631
ISLAND CAP B - OP 48 X 34.5 X 6	\$2682
ISLAND CAP B - OP 51 X 34.5 X 6	\$2733
ISLAND CAP B - OP 54 X 34.5 X 6	\$2784

Island End Cap C

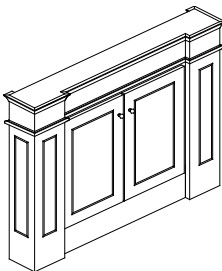
Island end cap with (2) 6" x 6" posts on each end w/ (2) integral panels in each. Integral panels in face with cove moulding and uc-mld applied. Comes standard at 34-1/2" high and 6" deep unless otherwise specified. Back will be flush finished.



ISLAND CAP C 36 X 34.5 X 6	\$2863
ISLAND CAP C 39 X 34.5 X 6	\$3121
ISLAND CAP C 42 X 34.5 X 6	\$3172
ISLAND CAP C 45 X 34.5 X 6	\$3223
ISLAND CAP C 48 X 34.5 X 6	\$3274
ISLAND CAP C 51 X 34.5 X 6	\$3325
ISLAND CAP C 54 X 34.5 X 6	\$3376

Island End Cap C - Operable

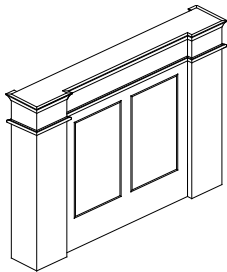
Island end cap with (2) 6" x 6" posts on each end w/ (2) integral panels in each. Operable doors on face with (2) adjustable shelves. Cove moulding applied and uc-mld applied. Comes standard at 34-1/2" high and 6" deep unless otherwise specified. Back will be flush finished.



ISLAND CAP C - OP 36 X 34.5 X 6	\$3199
ISLAND CAP C - OP 39 X 34.5 X 6	\$3457
ISLAND CAP C - OP 42 X 34.5 X 6	\$3508
ISLAND CAP C - OP 45 X 34.5 X 6	\$3559
ISLAND CAP C - OP 48 X 34.5 X 6	\$3610
ISLAND CAP C - OP 51 X 34.5 X 6	\$3661
ISLAND CAP C - OP 54 X 34.5 X 6	\$3712

Island End Cap D

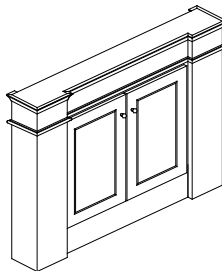
Island end cap with (2) 6" x 6" posts on each end. Integral panels in face with cove moulding and uc-mld applied. Comes standard at 34-1/2" high and 6" deep unless otherwise specified. Back will be flush finished.



ISLAND CAP D 36 X 34.5 X 6	\$\$2035
ISLAND CAP D 39 X 34.5 X 6	\$2293
ISLAND CAP D 42 X 34.5 X 6	\$2344
ISLAND CAP D 45 X 34.5 X 6	\$2395
ISLAND CAP D 48 X 34.5 X 6	\$2446
ISLAND CAP D 51 X 34.5 X 6	\$2497
ISLAND CAP D 54 X 34.5 X 6	\$2548

Island End Cap D - Operable

Island end cap with (2) 6" x 6" posts on each end. Operable doors on face with (2) adjustable shelves. Cove moulding applied and uc-mld applied. Comes standard at 34-1/2" high and 6" deep unless otherwise specified. Back will be flush finished.



ISLAND CAP D - OP 36 X 34.5 X 6	\$2371
ISLAND CAP D - OP 39 X 34.5 X 6	\$2629
ISLAND CAP D - OP 42 X 34.5 X 6	\$2680
ISLAND CAP D - OP 45 X 34.5 X 6	\$2731
ISLAND CAP D - OP 48 X 34.5 X 6	\$2782
ISLAND CAP D - OP 51 X 34.5 X 6	\$2833
ISLAND CAP D - OP 54 X 34.5 X 6	\$2884

Items on this page are available in the Hampshire Custom line only.

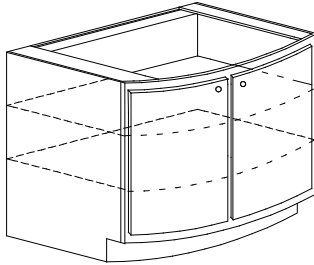
Bow Front and Curved Door Cabinetry

The following door styles are available in bow front and curved door cabinetry.

Buckingham	Douglas	Rothbury
Colony	Fairhaven	Saxony
Colony Cathedral	Federal	Shakertown
Concord	Hampton	Slab
Continental IX	Lancaster	Traditional
Continental X	Madison	Traditional Cathedral
Continental XII	Marquis	Village

Bow Front Cabinet

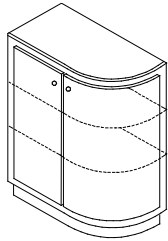
Please call factory for pricing.



	Rise	Depth at center of bow	
BOW 24	3 3/16	27 3/16	CALL
BOW 27	4 1/8	28 1/8	CALL
BOW 30	5 1/4	29 1/4	CALL
BOW 33	6 5/8	30 5/8	CALL
BOW 36	8 1/8	32 1/8	CALL

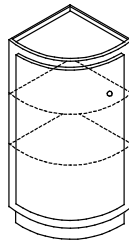
Curved BX Cabinets

NOTE: Pricing is for Traditional and Shakertown door styles. Please call factory for pricing on all other styles.



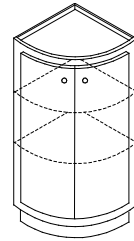
Cabinet will have a center mull and 2 adjustable shelved. Doors will open from center. Toekick is finished.

CBX 1224 CURVED L-R CALL



Cabinet will have one door, no mull, and 2 adjustable shelves. Toekick is finished.

CBX 1212 L-R CALL



Cabinet will have two doors, no mull, and 2 adjustable shelves. Toekick is finished.

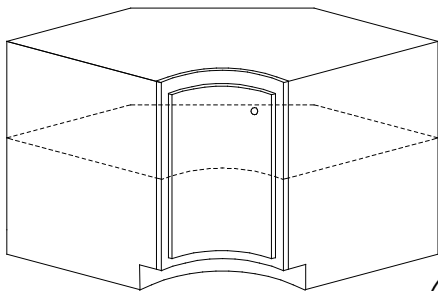
CBX 1818 CALL

CBX 2424 CALL

Curved Corner Base Cabinet

Includes 1 adjustable shelf. Toekick is finished.

NOTE: Pricing is for Traditional and Shakertown door styles. Please call factory for pricing on all other styles.



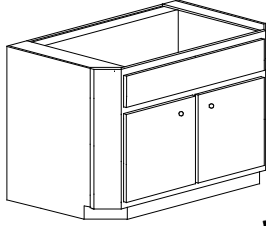
CSBCX 36 L-R CALL

Items on this page are available in the Hampshire Custom line only.

Sink Base Clipped Corner Cabinets

Sink base cabinet with two 3" clipped corners, 27" deep overall.
To add fluting, spindles, etc. see appropriate pages for pricing.

NOTE: Frameless 39"-48" wide cabinets will have a center partition.



SB 24 CC	L-R	\$1260	SB 30 CC	\$1289	SB 39 CC	\$1410
SB 27 CC	L-R	\$1278	SB 33 CC	\$1312	SB 42 CC	\$1476
			SB 36 CC	\$1362		

Page for notes